



CUT-TO-FIT | PRE-CUT | INVICLOSE® CLOSURE |
CLIPPED CLOSURE

Stoma care **Application Guide**

Convatec Esteem™ + Flat
One-piece Solutions



Accessories

Support Products

Accessories - designed for easy daily use with one-piece and two-piece stoma solutions.



Pouch Removal



ESENTA™ Sting Free Adhesive Remover Spray and Wipes

ESENTA™ Sting-free adhesive spray and wipes quickly remove all adhesive residue and help to reduce painful skin stripping and skin damage. For fast and easy adhesive release feeling silky and smooth.



Skin Preparation



ESENTA™ Sting Free Skin Barrier Spray and Wipes

ESENTA™ skin barrier creates a breathable barrier on the skin, reducing the risk of skin damage and irritation caused by body wastes, enzymes, and adhesives. Safe and effective even with frequent use.



Added Security



Diamonds™ Gelling and Odour Control Sachets

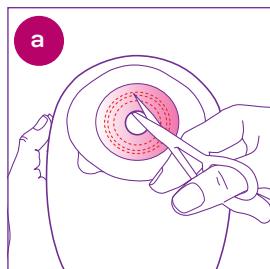
Super absorbent gelling sachets with unique ActiveOne™ odour control. Prevents leaks, odour and noise. Provides a flatter, discreet pouch.

To order call UK **0800 282 254** ROI **1800 721 721**

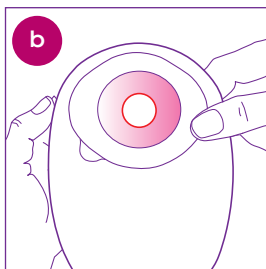
Esteem™ One-Piece Flat

APPLICATION GUIDE

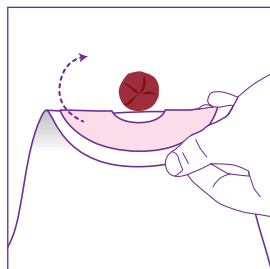
CHOOSE BASEPLATE



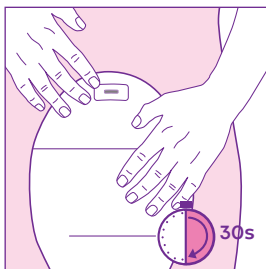
a. Cut-To-Fit Trace the shape of the stoma on to the baseplate using your stoma cutting guide. Cut the baseplate just outside the tracing, taking care not to cut the pouch film. Smooth cut opening with finger.



b. Pre-Cut Select pouch with pre-cut hole slightly larger than your stoma.

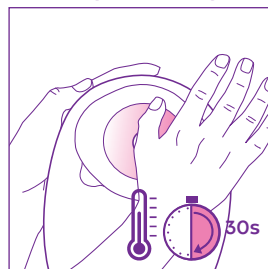


Hold the baseplate below your stoma.

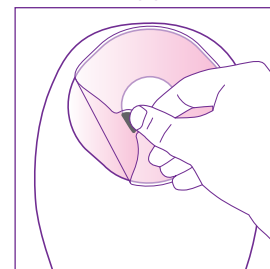
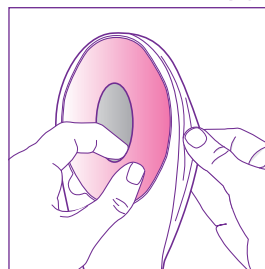


APPLYING THE POUCH

Ensure you close your Drainable or Urostomy pouch before application



Warm the baseplate with the palm of your hands for 30 seconds to aid adhesion. Separate pouch films to allow air to enter. Remove release liner.



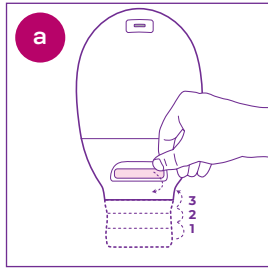
Beginning from the bottom apply baseplate against skin around the stoma for 30 seconds. Smooth into place and remove wrinkles.



Scan the QR code to watch the application video or use the link

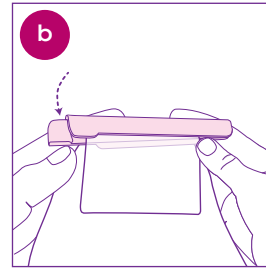
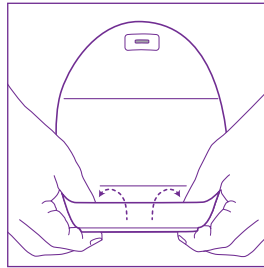
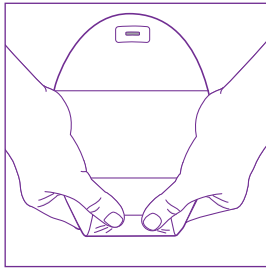
[Bit.ly/flat-application](https://bit.ly/flat-application)

CLOSING YOUR DRAINABLE POUCH (Choose your tail closure)



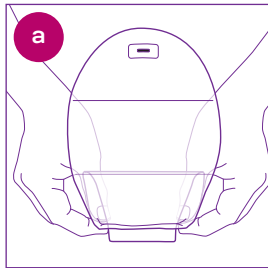
a. Invisiclose™ Closure - Fold tail closure with outlet strip until interlocking closures overlap. Press interlocking closures together across the width of the tail and squeeze until you feel them close.

Lock-it pocket™ - Turn pocket inside-out to conceal the tail closure.

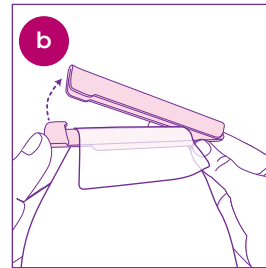
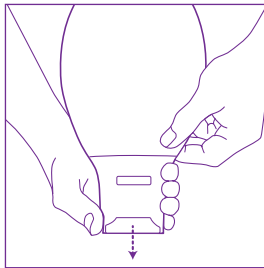
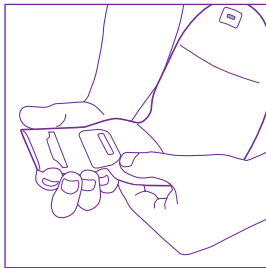


b. Clipped Closure
Once tail is folded clip in to place.

EMPTYING YOUR DRAINABLE POUCH (Choose your tail closure)

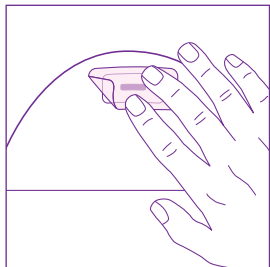


a. Invisiclose® Closure Take out the tail from Lock-it Pocket™. Unfold pouch closure and open the tail by squeezing in the outlet strips; drain pouch.



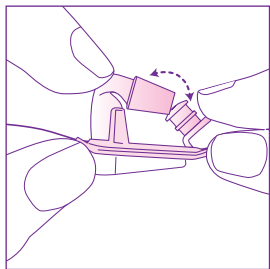
b. Clipped Closure
Remove clip to empty pouch.

FILTER

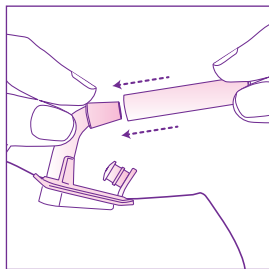


Cover the filter with a filter sticker for any water activity and remove after activity.

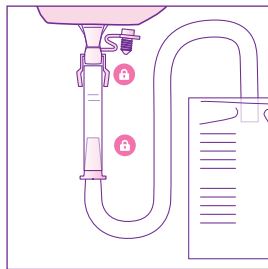
UROSTOMY POUCH - OPEN, CLOSE AND CONNECTING TO NIGHT BAG



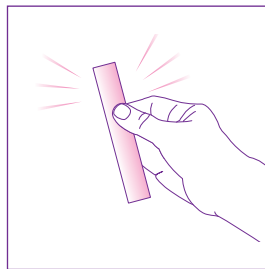
Fold-up Tap Place tap in or out of tap holder to open and close.



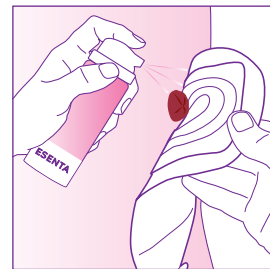
Connect Fold-up Tap connector.



Connecting your night bag Once your pouch tap is open, attach the connector to the tap and your night bag to the connector. Check all connection points are secure.



Retain your connector each time you dispose of your night bag.



For gentle removal use Esenta™ wipe or spray around edge of the baseplate and wait a few seconds. Gently peel baseplate away from skin.

For more information call UK **0800 282 254** ROI **1800 721 721**

Helpful numbers

To speak to one of our Product Specialists

Call UK **0800 282 254** - ROI **1800 721 721**

To speak to one of our me+™ Advisors

Call UK **0800 467 866** - ROI **1800 721 721**

To speak to our Clinical Nurse Specialist

Call UK **0800 085 2516** - ROI **1800 721 721**

To speak to one of our Amcare™ Agents*

Call **0800 88 50 50**



* Not available in Ireland. 1 - Reference: 1. Voegeli D, LBF® "No-Sting" Barrier Wipes: Skin Care Using Advanced Silicone Technology. British Journal of Nursing, 2008; Vol. 17: No. 7.
©2023 ConvaTec Inc. ®/™ all the trademarks are the property of ConvaTec group companies. AP-030469-MRL-GB OST337V4



Printed on FSC mix recycled paper. FSC forests are managed with consideration for people, wildlife and the environment.